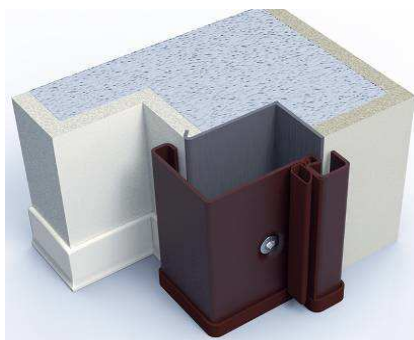


SECURITY LINE DOORS

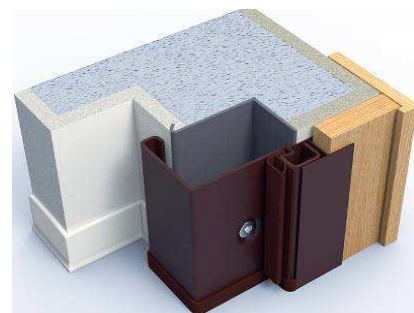
SOLUTIONS FOR STEEL FRAMES

SOLUTIONS WITH STEEL FRAMES



Solution n° 1

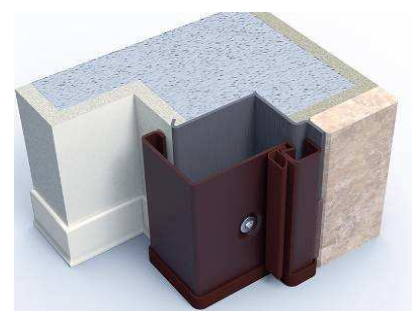
CODE	DESCRIPTION	PRICE
TL01/...	STANDARD SINGLE/DOUBLE LEAF FRAME	standard
CT1A/M	Std subframe for std single leaf doors	72,21
CT1A/M	Std subframe for extra single leaf doors	115,54
CTE01/M	Std subframes for out of std single leaf doors	115,54
CT2A/M	Std subframe for std double leaf doors	175,22
CTE02/M	Std subframe for extra/out of std double leaf doors	175,22



Solution n° 2

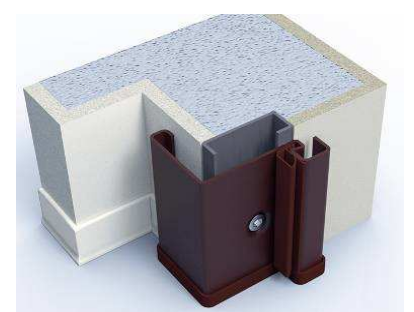
CODE	DESCRIPTION	PRICE
TL02/...	STANDARD SINGLE/DOUBLE LEAF FRAME	standard
CT1A/M	Std subframe for std single leaf doors	72,21
CT1A/M	Std subframe for extra single leaf doors	115,54
CTE01/M	Std subframes for out of std single leaf doors	115,54
CT2A/M	Std subframe for std double leaf doors	175,22
CTE02/M	Std subframe for extra/out of std double leaf doors	175,22

See Finishing Panel pricelist for extension lining prices



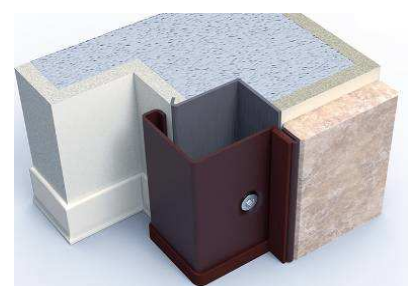
Solution n° 3

CODE	DESCRIPTION	PRICE
TL03/...	STANDARD SINGLE/DOUBLE LEAF FRAME	standard
CT(xxx)/M	Subframe "CT2" for std single leaf doors	149,53
CT(xxx)/M	Subframe "CT2" for extra single leaf doors	179,63
CTE01/M	Subframe "CT2" for out of std single leaf doors	205,96
CT(xxx)/M	Subframe "CT2" for std double leaf doors	178,55
CT(xxx)/M	Subframe "CT2" for extra double leaf doors	208,69
CTE02/M	Subframe "CT2" for out of std double leaf doors	246,85



Solution n° 4

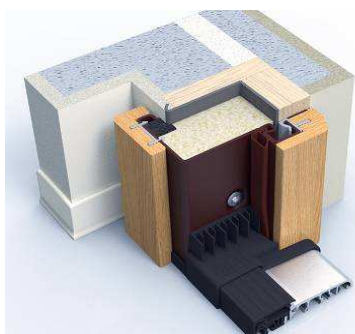
CODE	DESCRIPTION	PRICE
TL04/...	STANDARD SINGLE/DOUBLE LEAF FRAME	standard
CT(xxx)/M	SMALLER subframe "CT3" for std single leaf doors	149,53
CT(xxx)/M	SMALLER subframe "CT3" for extra single leaf doors	179,63
CTE01/M	SMALLER subframe "CT3" out of std single leaf doors	205,96
CT(xxx)/M	SMALLER subframe "CT3" for std double leaf doors	178,55
CT(xxx)/M	SMALLER subframe "CT3" for extra double leaf doors	208,69
CTE02/M	SMALLER subframe "CT3" out of std double leaf doors	246,85



Solution n° 5 - MAXIMUM HEIGHT 2300

CODE	DESCRIPTION	PRICE
TL05/...	Extra cost for frame and subframe with smaller extension	145,60

SOLUTIONS WITH STEEL FRAMES

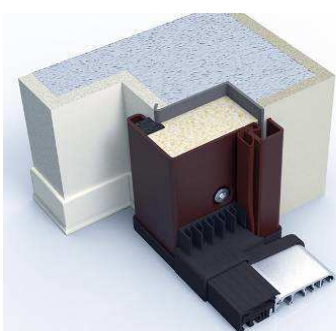


Solution n° 6 - MAXIMUM HEIGHT 2300

CODE	DESCRIPTION	PRICE
TL06/1A	STANDARD SINGLE/DOUBLE LEAF FRAME	standard
CTL/1A	WOOD-COATED SINGLE LEAF SUBFRAME	272,21
CTL/2A	WOOD-COATED DOUBLE LEAF SUBFRAME	334,58
SUPTME/..	Flat-melamine Outside or Inside frames	80/each
SUPTME/..	Outside or Inside frames lacquered in any Ral colours	120/each
SUPTME/..	Polymer-veneered Outside frames	160,00
SOGTT/1A	THERMAL BREAK THRESHOLD FOR SINGLE LEAF DOORS**	145,60

* EXCEPT FOR SMOOTH BRUSHED GUN/SILVER COLOURS

** ONLY FOR "WATERTIGHT" SUBFRAMES, WHICH ARE 2CM HIGHER THAN STD

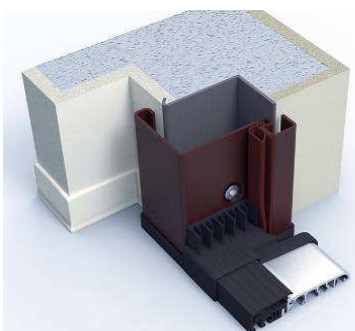


Solution n° 6a

CODE	DESCRIPTION	PRICE
TL06A	STANDARD FRAME FOR SOUND DOORS***	standard
SOGTT/1A	THERMAL BREAK THRESHOLD FOR SINGLE LEAF DOORS**	145,60
CT1A/M	Std subframe for std single leaf doors	72,21
CT1A/M	Std subframe for extra single leaf doors	115,54
CTE01/M	Std subframe for out of std single leaf doors	115,54

** ONLY FOR "WATERTIGHT" SUBFRAMES, WHICH ARE 2CM HIGHER THAN STD

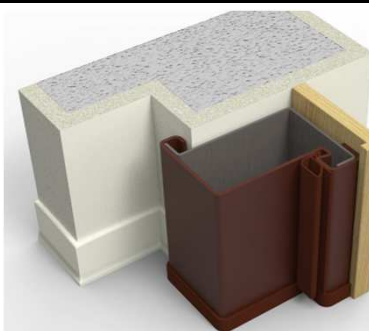
*** EXCEPT FOR SOUND JUNIOR DOORS



Solution n° 6b

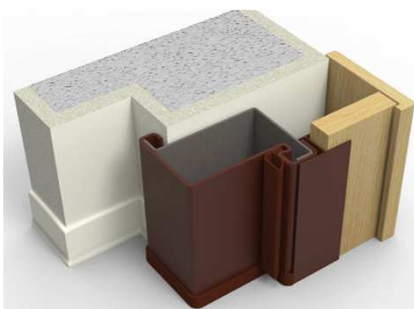
CODE	DESCRIPTION	PRICE
TL06B/...	STANDARD SINGLE/DOUBLE LEAF FRAME	standard
SOGTT/1A	THERMAL BREAK THRESHOLD FOR SINGLE LEAF DOORS**	145,60
SOGTT/2A	THERMAL BREAK THRESHOLD FOR DOUBLE LEAF DOORS	291,20
CT1A/M	Std subframe for std single leaf doors	72,21
CT1A/M	Std subframe for extra single leaf doors	115,54
CTE01/M	Std subframe for out of std single leaf doors	115,54
CT2A/M	Std subframe for std double leaf doors	175,22
CTE02/M	Std subframe for extra/out of std double leaf doors	175,22

** ONLY FOR "WATERTIGHT" SUBFRAMES, WHICH ARE 2CM HIGHER THAN STD



Solution n° 13 - MAXIMUM HEIGHT 2300

CODE	DESCRIPTION	PRICE
TL13/1A	BOX-SHAPED SINGLE LEAF FRAME	128,00
TL13/2A	BOX-SHAPED DOUBLE LEAF FRAME	155,00
MOSTR	OUTSIDE FRAMES	74,21

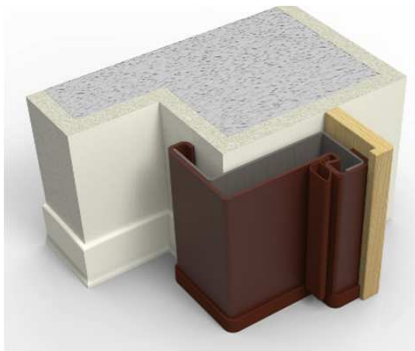


Solution n° 14 - MAXIMUM HEIGHT 2300

CODE	DESCRIPTION	PRICE
TL14/1A	BOX-SHAPED SINGLE LEAF FRAME	128,00
TL14/2A	BOX-SHAPED DOUBLE LEAF FRAME	155,00
MOSTR	OUTSIDE FRAMES	74,21

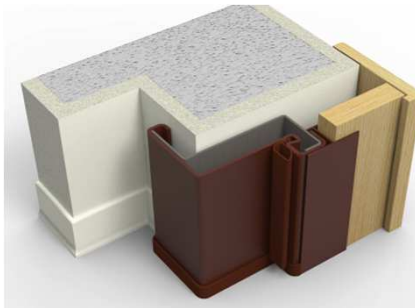
See Finishing Panel pricelist for extension lining prices

SOLUTIONS WITH STEEL FRAMES



Solution n° 15 - MAXIMUM HEIGHT 2300

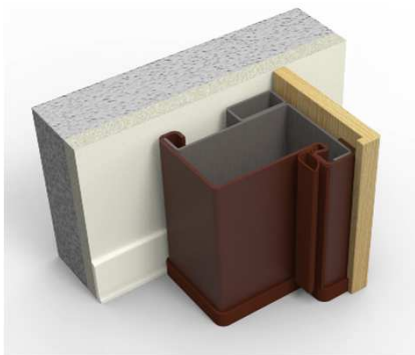
CODE	DESCRIPTION	PRICE
TL15/1A	SMALLER BOX-SHAPED SINGLE LEAF FRAME	128,00
TL15/2A	SMALLER BOX-SHAPED DOUBLE LEAF FRAME	155,00
MOSTR	OUTSIDE FRAMES	74,21



Solution n° 15bis - MAXIMUM HEIGHT 2300

CODE	DESCRIPTION	PRICE
TL15B/1A	SMALLER BOX-SHAPED SINGLE LEAF FRAME	128,00
TL15B/2A	SMALLER BOX-SHAPED DOUBLE LEAF FRAME	155,00
MOSTR	OUTSIDE FRAMES	74,21

See Finishing Panel pricelist for extension lining prices



Solution n° 16 - MAXIMUM HEIGHT 2300

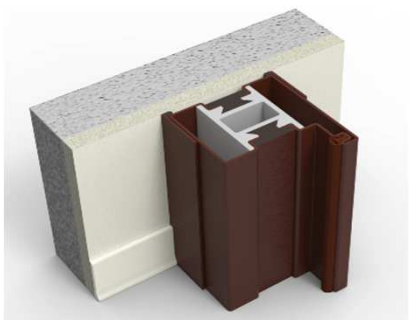
CODE	DESCRIPTION	PRICE
TL16/1A	SMALLER BOX-SHAPED SINGLE LEAF FRAME	193,00
TL16/2A	SMALLER BOX-SHAPED DOUBLE LEAF FRAME	220,00
MOSTR	OUTSIDE FRAMES	74,21



Solution n° 17 - MAXIMUM HEIGHT 2300

CODE	DESCRIPTION	PRICE
TL17/1A/20	BOX-SHAPED SINGLE LEAF FRAME WITH 20MM EXTENSION	193,00
TL17/1A/40	BOX-SHAPED SINGLE LEAF FRAME WITH 40MM EXTENSION	213,00
TL17/1A/60	BOX-SHAPED SINGLE LEAF FRAME WITH 60MM EXTENSION	233,00
TL17/1A/80	BOX-SHAPED SINGLE LEAF FRAME WITH 80MM EXTENSION	253,00
TL17/2A/20	BOX-SHAPED DOUBLE LEAF FRAME WITH 20MM EXTENSION	220,00
TL17/2A/40	BOX-SHAPED DOUBLE LEAF FRAME WITH 40MM EXTENSION	247,00
TL17/2A/60	BOX-SHAPED DOUBLE LEAF FRAME WITH 60MM EXTENSION	274,00
TL17/2A/80	BOX-SHAPED DOUBLE LEAF FRAME WITH 80MM EXTENSION	301,00
MOSTR/INT	INSIDE FRAMES	74,21

SEE EXTENSION LINING SECTION FOR OUTSIDE FRAMES



Solution n° 18 - MAXIMUM HEIGHT 2300

CODE	DESCRIPTION	PRICE
TL18/1A	THERMAL BREAK BOX-SHAPED SINGLE LEAF FRAME	900,00
TL18/2A	THERMAL BREAK BOX-SHAPED DOUBLE LEAF FRAME	1.100,00

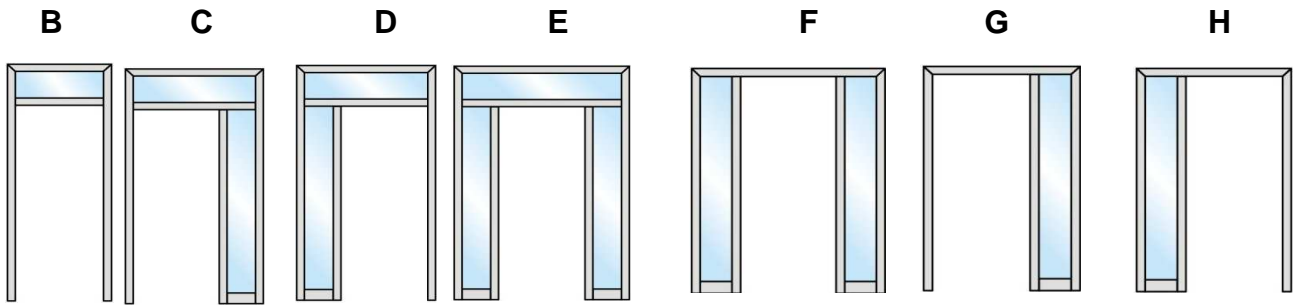
SECURITY LINE DOORS

STEEL TOP WINDOWS AND SIDE
WINDOWS

TOP WINDOW AND SIDE WINDOW

POSSIBLE SOLUTIONS WITH STEEL FRAME

ASSEMBLY CODE - EXTERNAL SIDE VIEW



SINGLE LEAF

ONLY FRAME PRICE							
	B*	C**	D**	E**	F**	G**	H**
PRICE	292,67	1.502,28	1.502,28	2.448,16	1.613,56	845,73	845,73

DOUBLE LEAF

ONLY FRAME PRICE							
	B**	C**	D**	E**	F**	G**	H**
PRICE	330,95	1.727,62	1.727,62	2.815,38	1.855,59	972,59	972,59

Glasses available in the following colours:

Transparent, Bronzed, Smoked, Satinated White, Satinated Bronze, Milk White, Mirrored.

ANTI-INTRUSION 19mm thick

TOP WINDOW glass				SIDE WINDOW glass	
	WIDTH UP TO 1000	WIDTH UP TO 1500	MORE THAN 1500	WIDTH UP TO 450	WIDTH UP TO 700
	PRICE	PRICE	PRICE	PRICE	PRICE
HEIGHT UP TO 600	140,42	190,98	240,98	320,96	495,42
HEIGHT MORE THAN 600	280,84	381,96	481,96		

DOUBLE GLAZING 32mm thick

TOP WINDOW glass				SIDE WINDOW glass	
	WIDTH UP TO 1000	WIDTH UP TO 1500	MORE THAN 1500	WIDTH UP TO 450	WIDTH UP TO 700
	PRICE	PRICE	PRICE	PRICE	PRICE
HEIGHT UP TO 600	270,42	320,98	410,98	410,69	550,42
HEIGHT MORE THAN 600	540,84	641,96	821,96		

NOTE: One of the two dimensions for side window + top window frame must be less than 2200mm.

* Out of standard subframe.

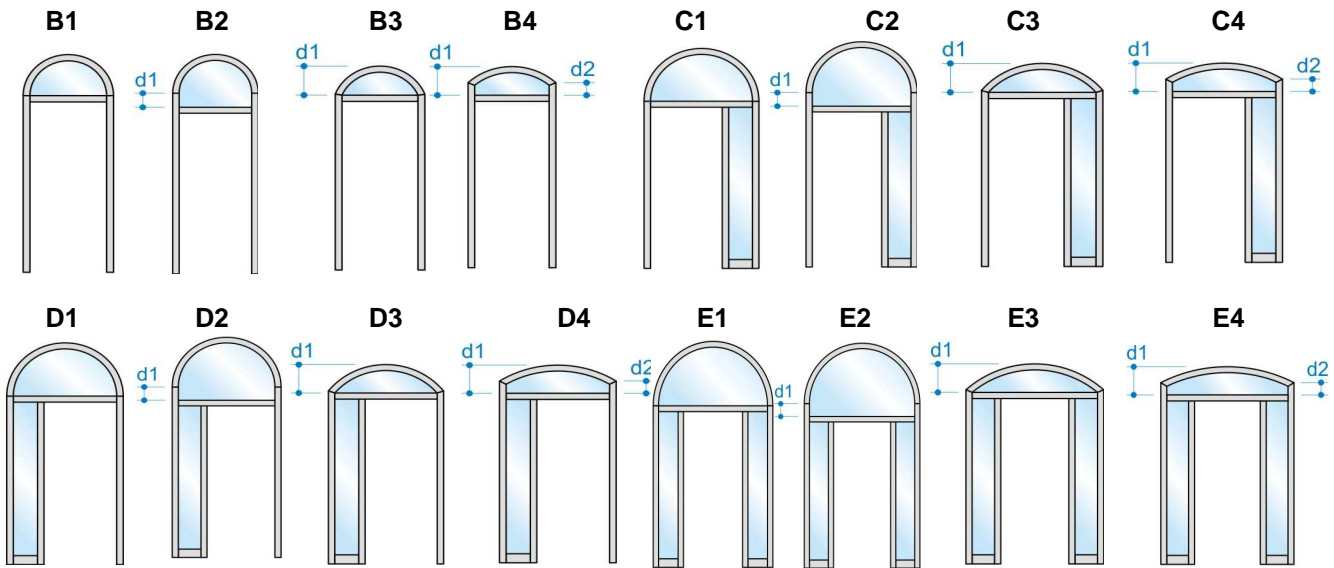
Euro 152,82

** Out of standard double leaf subframe.

Euro 200,30

TOP WINDOW AND SIDE WINDOW

ASSEMBLY CODE - EXTERNAL SIDE VIEW



SINGLE LEAF

ONLY FRAME PRICE

	B1-B2*	B3-B4*	C1-C2-D1-D2**	C3-C4-D3-D4**	E1-E2**	E3-E4**
PRICE	1.052,71	1.175,12	1.898,44	2.020,84	2.666,27	2.788,68

DOUBLE LEAF

ONLY FRAME PRICE

	B1-B2**	B3-B4**	C1-C2-D1-D2**	C3-C4-D3-D4**	E1-E2**	E3-E4**
PRICE	1.181,79	1.304,20	2.027,52	2.149,93	2.795,35	2.917,76

ANTI-INTRUSION 19mm thick

TOP WINDOW glass				SIDE WINDOW glass	
	WIDTH UP TO 1000	WIDTH UP TO 1500	MORE THAN 1500	WIDTH UP TO 450	WIDTH UP TO 700
	PRICE	PRICE	PRICE	PRICE	PRICE
HEIGHT UP TO 600	140,42	190,98	240,98	320,96	495,42
HEIGHT MORE THAN 600	280,84	381,96	481,96		

DOUBLE GLAZING 32mm thick

TOP WINDOW glass				SIDE WINDOW glass	
	WIDTH UP TO 1000	WIDTH UP TO 1500	MORE THAN 1500	WIDTH UP TO 450	WIDTH UP TO 700
	PRICE	PRICE	PRICE	PRICE	PRICE
HEIGHT UP TO 600	270,42	320,98	410,98	410,69	550,42
HEIGHT MORE THAN 600	540,84	641,96	821,96		

NOTE: One of the two dimensions for side window + top window frame must be less than 2200mm.

NOTE: For doors with arched top window, the subframe, the frame and the door will be delivered together.

NOTE: For solutions with only one side window, the hinge has to be always installed on wall side jamb.

* Out of standard subframe.

Euro 152,82

**Out of standard double leaf subframe.

Euro 200,30